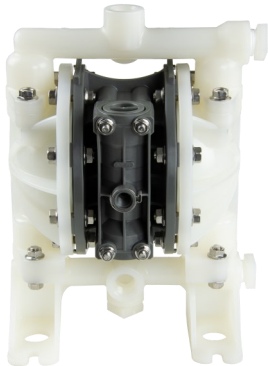


Air Operated Double Diaphragm Pump



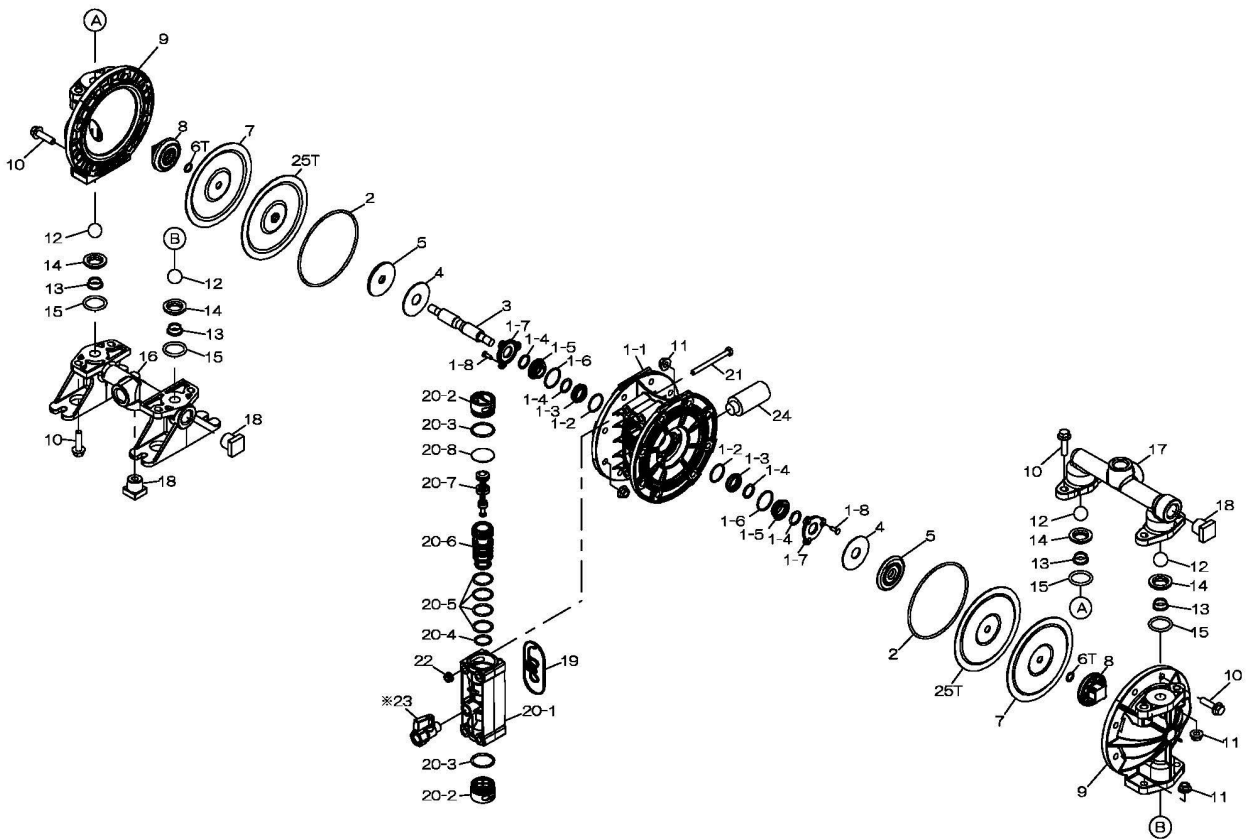
To Purchase:

- 800-990-7867
- sales@yamadapump.com
- Find My Rep

More Information:

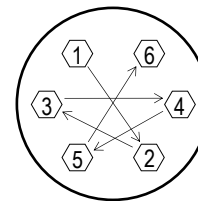
- YouTube: @yamadapump
- yamadapump.com
- Data Sheets | CAD Drawings | Manuals Literature | BOM | Performance Curves*

Trial Program



Air Operated Double Diaphragm Pump

	G15VH11	G15VS11	G15VT11			
	854987	854986	854985			
REF. NO.	PART NO.	PART NO.	PART NO.	DESCRIPTION	QTY.	REORDER
1	805217	805217	805217	BODY ASSY	1	
1-1	773410	773410	773410	CENTER BODY	1	
1-2	686893	686893	686893	O RING	2	
1-3	773385	773385	773385	GUIDE BUSHING A	2	
1-4	640015	640015	640015	O RING	4	
1-5	780301	780301	780301	GUIDE BUSHING B	2	
1-6	684900	684900	684900	O RING	2	
1-7	773384	773384	773384	GUIDE BUSHING STOPPER	2	
1-8	686894	686894	686894	TAPPING SCREW	6	
2	640147	640147	640147	O RING	2	
3	717100	717100	717100	CENTER ROD	1	
4	773278	773278	773278	CUSHION	2	
5	716923	716923	716923	CENTER DISK	2	
6T	—	—	643007	O RING	2	
7	773316	773315	773276	DIAPHRAGM	2	
8	773400	773400	773400	CENTER DISK	2	
9	780304	780304	780304	OUT CHAMBER	2	
10	686892	686892	686892	FLANGED BOLT	24	
11	686032	686032	686032	FLANGED NUT	24	
12	773374	773424	773423	BALL	4	
13	773432	773432	773432	VALVE SEAT B	4	
14	773431	773431	773431	VALVE SEAT A	4	
15	643025	643025	643025	O RING PTFE	4	
16	780309	780309	780309	MANIFOLD B	1	
17	773404	773404	773404	MANIFOLD A	1	
18	773402	773402	773402	PLUG	3	
19	773407	773407	773407	GASKET	1	
20	805210	805210	805210	VALVE BODY ASSY	1	
20-1	833226	833226	833226	VALVE BODY	1	
20-2	773383	773383	773383	CAP	2	
20-3	685135	685135	685135	O RING	2	
20-4	685453	685453	685453	O RING	1	
20-5	771080	771080	771080	O RING	4	
20-6	780302	780302	780302	SLEEVE	1	
20-7	805208	805208	805208	SPOOL ASSY	1	
20-8	773428	773428	773428	CUSHION	1	
21	621115	621115	621115	BOLT	4	
22	684086	684086	684086	FLANGED NUT	4	
*23	686826	686826	686826	BALL VALVE	1	
24	686762	686762	686762	MUFFLER	1	
25T	—	—	773447	BACK UP DIAPHRAGM	2	
KIT	KG15-VH	KG15-VS	KG15-VT	LIQUID END KIT		
KIT		KG15-AM-P		AIR MOTOR KIT		



Tightening torque:

Center Rod	177 in-lbf {20 N-m}
Out Chambers	89 in-lbf {10 N-m}
Manifold Retainer Bolts or Nuts	89 in-lbf {10 N-m}

General Tools:

- Socket wrench - 10mm, 12mm
- Hexagonal box wrenches - 5mm
- Open-end wrench - 12mm, 22mm
- Phillips head screw driver
- Pliers

Special Tools/Parts (sold separately):

- Sleeve remover (713148)
- Ball Valve (686826)

Miscellaneous:

- Assembly Oil - turbine oil class 1 (equivalent to ISO VG32 grade)
- Urea grease grade (NLGI) No. 2
- Thread locking agent (equivalent to LOCTITE® 222)

Customer Notes

Model #: _____
 Description: _____
 Serial #: _____
 Date Installed: _____
 Department Location: _____
 Tag/Project: _____